

**THE VALE OF GLAMORGAN COUNCIL
(PROHIBITION AND RESTRICTION OF WAITING AND
LOADING AND PARKING PLACES)
(CIVIL ENFORCEMENT) (AMENDMENT) (NO 4) ORDER 2021**

The Vale of Glamorgan Council in exercise of its powers under the Road Traffic Regulation Act 1984 and Part 6 of the Traffic Management Act 2004 and of all other powers enabling it in that behalf and after consultation with the Chief Officer of South Wales Police, in accordance with Part III of Schedule 9 to the said Act of 1984 hereby makes the following Order:-

Interpretation

Regulation of Parking Places

No person shall except upon the direction or with the permission of a police constable in uniform or a Civil Parking Enforcement Officer cause or permit any vehicle to wait at any time in the lengths of road referred to in the Schedules to this Order.

1. Where a police constable in uniform or a traffic warden is of the opinion that the provisions contained in this Order have been contravened he may remove or cause to be removed the vehicle from its Parking Place.
2. A police constable in uniform or a traffic warden may move or cause to be moved in case of emergency to any place he thinks fit any vehicle left in a Parking Place and where it is so removed shall provide for the safe custody of the vehicle.
3. Every vehicle left in a Parking Place shall stand so that every part of the vehicle is within the limits of the Parking Place.
4. A police constable in uniform or a traffic warden or a person duly authorised by the Council may suspend the use of a Parking Place or any part thereof whenever he considers such suspension reasonably necessary:-
 - (i) for the purpose of facilitating the movement of traffic or promoting its safety;
 - (ii) for the purpose of any building operation the maintenance improvement or reconstruction of the highway or the cleansing of gullies in or adjacent to the Parking Place the laying erection alteration or repair in or adjacent to the Parking Place or any sewer or of any main pipe or apparatus for the supply of gas water electricity or of any telecommunication system or the placing maintenance or removal of any traffic sign;

- (iii) for the convenience of occupiers of premises adjacent to the Parking Place on any occasion of the delivery or removal of furniture to or from an office or dwellinghouse adjacent to the Parking Place;
- (iv) on any occasion on which it is likely by reason of some special attraction that the street in which the Parking Place is situate will be thronged or obstructed;
- (v) for the convenience of occupiers of premises adjacent to the Parking Place for parking the official vehicles (provided that there are no more than three) being at that time in use in connection with a wedding taking place that day comprising only the vehicles to transport the bride and/or the bridegroom and/or the bridesmaids to the place of the marriage ceremony on the wedding day;
- (vi) for the convenience of occupiers of premises adjacent to the Parking Place for the use of vehicle as a part of a funeral cortege or otherwise in connection with a funeral provided the vehicle is owned by a funeral director or by an owner of funeral vehicles.

5. Any person or police constable in uniform or traffic warden suspending the use of a Parking Place or any part thereof in accordance with the provisions of this Order shall thereupon place or cause to be placed in or adjacent to that Parking Place or as the case may be that part thereof the use of which is suspended a traffic sign of any size colour and type prescribed or authorised under Section 64 of the Act of 1984 indicating that waiting of vehicles is prohibited.
6. No person shall cause or permit a vehicle to wait in any part of the Parking Place during such period as there is in or adjacent to that part of the Parking Place in a traffic sign placed in pursuance of this Order.
7. Notwithstanding the foregoing provisions of this order any vehicle may wait in any part of a Parking Place provided that:-
 - (i) the vehicle is waiting only for so long as is necessary to enable a person to board or alight from the vehicle;
 - (ii) the vehicle is waiting owing to the driver being prevented from proceeding by circumstances beyond his control or such waiting being necessary in order to avoid an accident;
 - (iii) the vehicle is being used for fire brigade or ambulance purposes or a vehicle (other than a passenger vehicle) in the service of a police force in either case being used in pursuance of statutory powers or duties;
 - (iv) the vehicle is waiting for only so long as may be necessary to enable it to be used in connection with the removal of any obstruction to traffic;
 - (v) the driver has been given the permission of the Council;

- (vi) the driver has been given the permission of a police constable in uniform, a traffic warden or the person suspending the use of the Parking Place or part thereof in pursuance of this Order.

Except as provided by this Order or upon the direction or with the permission of a police constable in uniform or a traffic warden no person shall cause or permit any vehicle to wait at any time in a Parking Place designated by this Order, unless the vehicle is displaying in a conspicuous position a Badge in accordance with the Disabled Person (Badges for Motor Vehicles) (Wales) Regulations 2000 and a Parking Disc as defined in the Local Authorities Traffic Orders (Exemptions for Disabled Persons) (Wales) Regulations 2000.

Citation and Commencement

The restrictions imposed by this Order shall be in addition to and not in derogation of any restriction or requirement imposed by any regulations made or having effect as if made under the Road Traffic Regulation Act 1984 or by or under any other enactment.

This Order shall come into operation on the 19th July 2021 or on the dates that the signs and road markings are in place whichever is the later and may be cited as the "Vale of Glamorgan Council (Prohibition and Restriction of Waiting and Loading and Parking Places) (Civil Enforcement) (Amendment) (No 4) Order 2021".

The following Traffic Regulation Order is to be amended as follows:

Vale of Glamorgan Council (Prohibition and Restriction of Waiting and Loading and Parking Places) (Civil Enforcement) Order 2013

SCHEDULE 1

Revoke the following Prohibition of Waiting at Any Time restriction contained within The Vale of Glamorgan Council (Prohibition and Restriction of Waiting and Loading and Parking Places) (Civil Enforcement) Order 2013:

Remove from Map Schedules AZ51

Plymouth Road, Barry

On the southern side, from a point 15 metres east of its junction with Amherst Crescent, eastwards for a distance of approximately 30 metres.

On the southern side, from a point 70 metres east of its junction with Amherst Crescent, eastwards for a distance of approximately 30 metres.

On the southern side, from a point 15 metres east of its junction with Archer Road, eastwards for a distance of approximately 24 metres.

On the southern side, from a point 57 metres east of its junction with Archer Road, eastwards for a distance of approximately 24 metres.

Revoke the following Resident Permit Holders Only (8:00am to 6:30pm) contained within The Vale of Glamorgan Council (Prohibition and Restriction of Waiting and Loading and Parking Places) (Civil Enforcement) Order 2013:

Remove from Map Schedules AZ51 and BA51

Plymouth Road, Barry

On the northern side, from the common boundaries of property numbers 56 and 57 south-westwards to the common boundaries of property numbers 58 and 59, a distance of approximately 18.5 metres.

On the northern side, from the common boundaries of property numbers 43 and 44, eastwards for a distance of approximately 24 metres.

SCHEDULE 2

Proposed Limited Waiting (2 hours no return within 2 hours):

Insert into Map Schedules AZ51

Plymouth Road, Barry

On the southern side, from a point 15 metres east of its junction with Amherst Crescent, eastwards for a distance of approximately 30 metres.

On the southern side, from a point 70 metres east of its junction with Amherst Crescent, eastwards for a distance of approximately 30 metres.

On the southern side, from a point 15 metres east of its junction with Archer Road, eastwards for a distance of approximately 24 metres.

On the southern side, from a point 57 metres east of its junction with Archer Road, eastwards for a distance of approximately 24 metres.

Insert into Map Schedules BA52

Redbrink Crescent, Barry

On the southern side, from a point 32 metres east of its junction with Friars Road, eastwards for a distance of approximately 30 metres,

On the southern side, from a point 82 metres east of its junction with Friars Road, eastwards for a distance of approximately 30 metres.

On the south-eastern side, from a point 132 metres east of its junction with Friars Road, north-eastwards for a distance of approximately 30 metres.

On the eastern side, from a point 182 metres east of its junction with Friars Road, northwards for a distance of approximately 30 metres.

SCHEDULE 3

Proposed No Waiting at Any Time:

Insert into Map Schedules BA52

Redbrink Crescent, Barry

On the southern side, from its junction with Friars Road, eastwards for a distance of approximately 32 metres,

On the southern side, from a point 62 metres east of its junction with Friars Road, eastwards for a distance of approximately 20 metres.

On the south-eastern side, from a point 112 metres east of its junction with Friars Road, north-eastwards for a distance of approximately 20 metres.
On the south-eastern side, from a point 162 metres east of its junction with Friars Road, north-eastwards for a distance of approximately 20 metres.
On the eastern side, from a point 212 metres in a generally easterly then a northerly direction from its junction with Friars Road, northwards for a distance of approximately 20 metres.

SCHEDULE 4

Proposed Resident Permit Parking Areas:

Amend the Resident Permit Areas contained within Schedule 1 of The Vale of Glamorgan Council (Prohibition and Restriction of Waiting and Loading and Parking Places) (Civil Enforcement) Order 2013, to include the following locations outlined within Barry Island, The Knap and Ogmere-by-Sea and the specific property numbers that will be eligible for parking permits, together with the removal of the footnote in Schedule 1, to include Refer to the "Resident Parking Permit Types and Criteria For Use", within paragraph 4 of the Vale of Glamorgan Council Resident Parking Controls Policy.

Insert into Map Schedules AZ51, AZ52, BA51, BA52 & BB52 Barry Island

Zone: BIZ01

Adar Y Mor: from its junction with Breaksea Drive, throughout its entire length.

Gwalch Y Penwaig: throughout its entire length.

Gwennol Y Mor: throughout its entire length.

Heol Gyfinir: Throughout its entire length.

Zone: BIZ02

Earl Crescent: from its junction with Friars Road, throughout its entire length.

Zone: BIZ03

Redbrink Crescent: (properties 44 to 74 only), between its junctions with Friars Road and Marquis Close, a distance of approximately 272 metres.

Friars Road: (properties 1, 3, 11, 13, 15 & 17 only), Ger-y-Mor, (properties 1 to 20), St John's Court, (properties 1 to 3) Breaksea Court (properties 1 to 6), Barry Island Community Centre, between its junctions with Plymouth Road and Redbrink Crescent, a distance of approximately 177 metres.

Zone: BIZ04

Dyfrig Street: between its junctions with Redbrink Crescent, throughout its entire length.

Marquis Close: from its junction with Redbrink Crescent, throughout its entire length.

Redbrink Crescent: (properties 1 to 42 only), between its junctions with Marquis Close and Plymouth Road, a distance of approximately 220 metres.

Zone: BIZ05

Friars Road: (properties 6 to 26 only), between its junctions with Redbrink Crescent and its roundabout junctions with Heol Eyr Mor and Clos Yr Wylan, a distance of approximately 161 metres.

Clos Yr Wylan: from its roundabout junction with Friars Road and Heol Eyr Mor, throughout its entire length.

Gwennol Y Graig: from its junction with Clos Yr Wylan throughout its entire length.

Heol Eyr Mor: from its roundabout junction with Friars Road and Clos Yr Wylan, throughout its entire length.

Clos Y Fulfran: from its junction with Clos Yr Wylan, throughout its entire length.

Pioden For: from its junction with Clos Yr Wylan, throughout its entire length.

Zone: BIZ06

Plymouth Road: between its junctions with Redbrink Crescent and Paget Road, a distance of approximately 646 metres.

Insert into Map Schedule BA48

The Knap, Barry

Zone: TKZ01

Heol-Y-Bryn: between its junctions with Bron-Y-Mor and Maes-Y-Coed, a distance of approximately 127 metres.

Heol-Y-Gaer: from its junction with Heol-Y-Bryn, throughout its entire length.

Maes-Y-Coed: (excluding properties 1 to 39 Glan Hafren), in a northerly and southerly direction from its junction with Heol-Y-Bryn, throughout its entire length.

Glan-Y-Mor: from its junction with Maes-Y-Coes, throughout its entire length.

Zone: TKZ02

Birch Grove: from its junction with Bron-Y-Mor, throughout its entire length.

Insert into Map Schedules X2, Y2, Y3, Z2 & Z3

Ogmore-by-Sea

Zone: OBSZ01

Main Road (Route B4524): from its junction with Craig-Yr-Eos Road, in a generally north-westerly direction, to the northern boundary of property number 2 Main Road, a distance of approximately 470 metres.

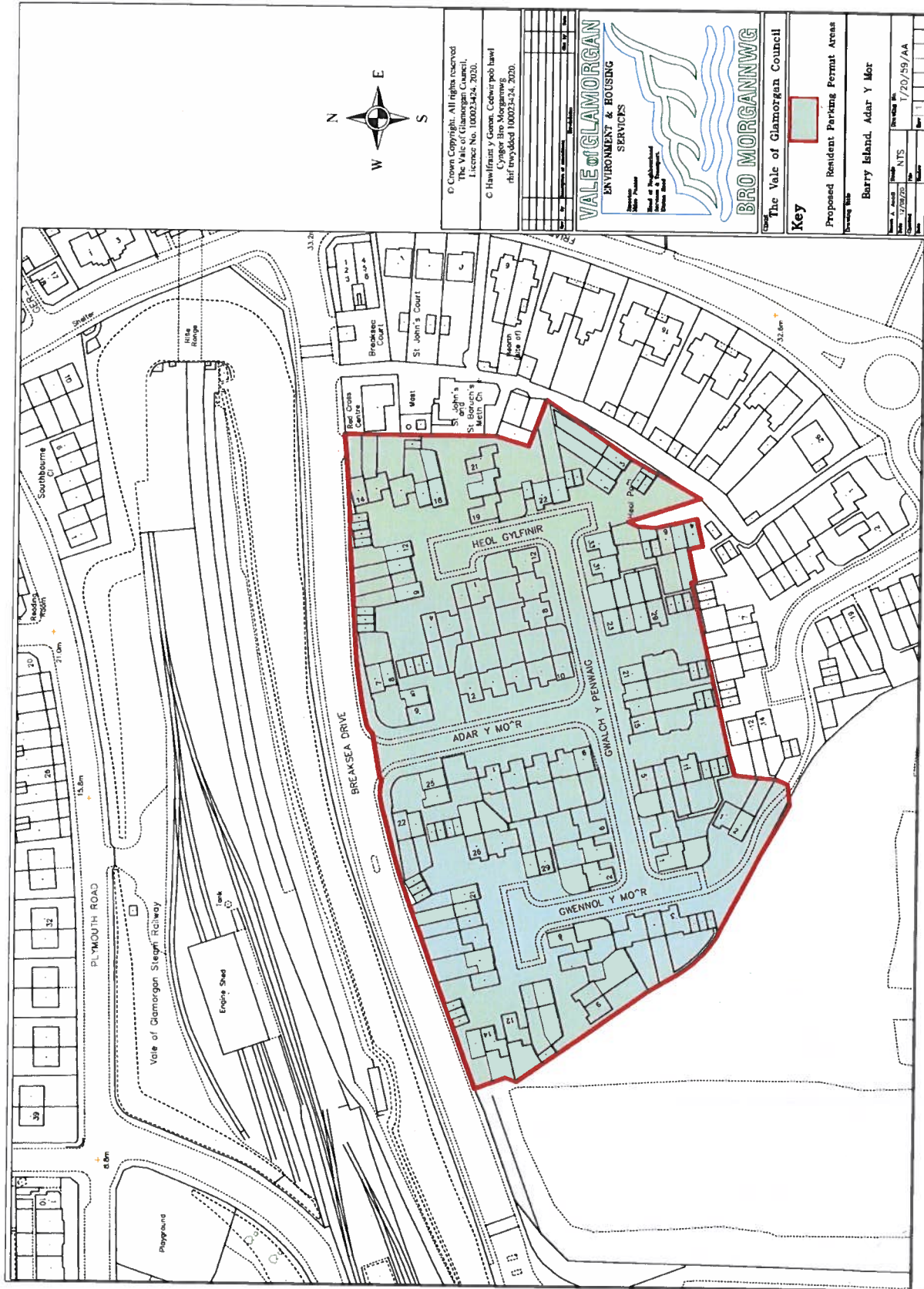
Zone: OBSZ02

Seaview Drive: from its junction with Main Road (Route B4524), throughout its entire length.

Marine Walk: from its junction with Seaview Drive, throughout its entire length.

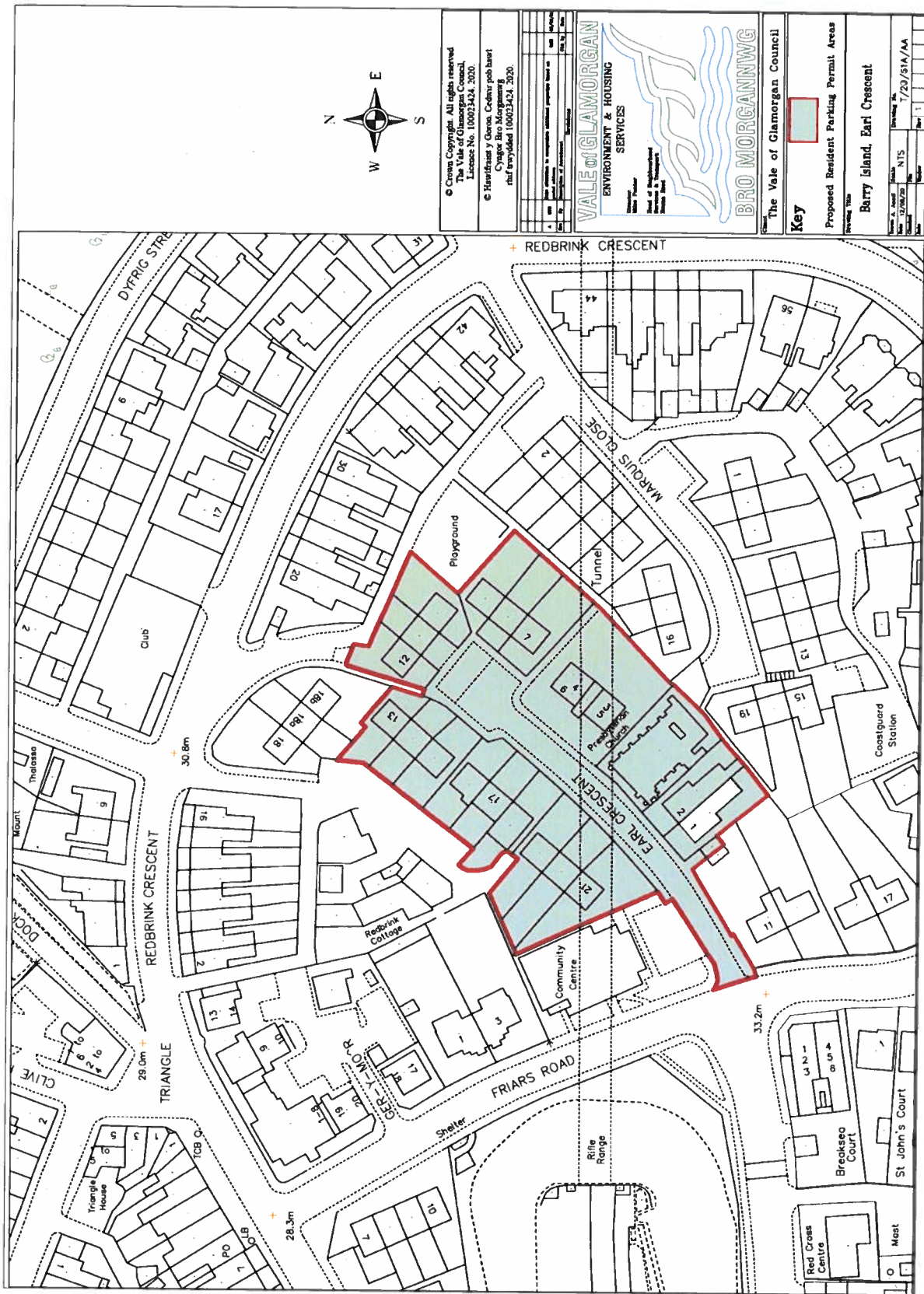
Marine Drive: from its junction with Seaview Drive, throughout its entire length.

Barry Island – Zone: BIZ01 (Scheme Drawing T/20/59/AA)



30

Barry Island – Zone: BIZ02 (Scheme Drawing T/20/61A/AA)



© Crown Copyright. All rights reserved.
The Vale of Glamorgan Council
License No. 100013424, 2020.

© Harlequin / Gars. Centre pub bar
Copyright © 2020
and reproduced 100013424, 2020.

VALE OF GLAMORGAN
ENVIRONMENT & HOUSING
SERVICES

BRO MORGANNWG
The Vale of Glamorgan Council

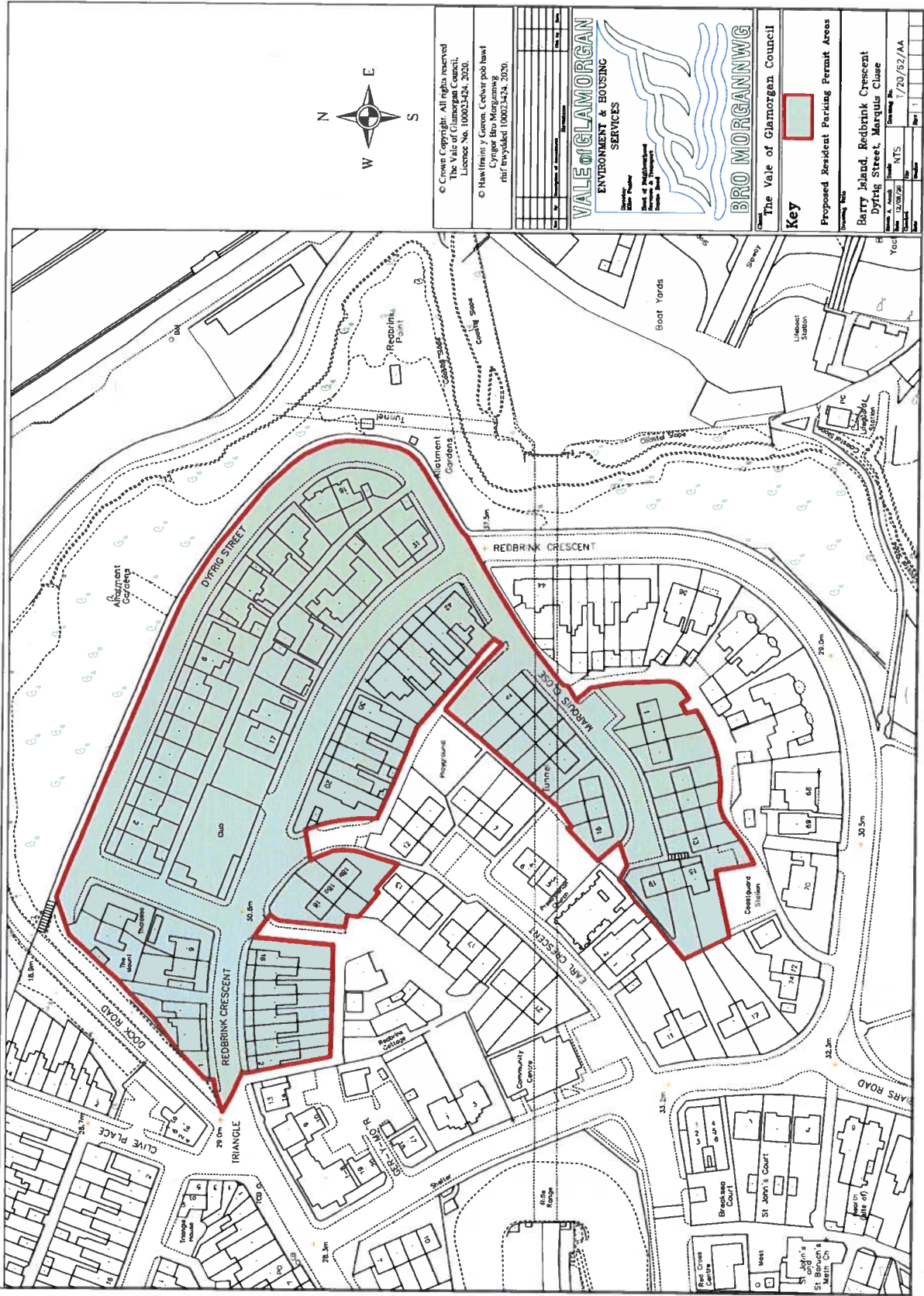
Key	
Proposed Resident Parking Permit Areas	
Barry Island, Earl Crescent	
Drawn: A. Jones	Check: NTS
Date: 12/06/20	Rev: 1
Drawing No: T/20/61A/AA	

3

20

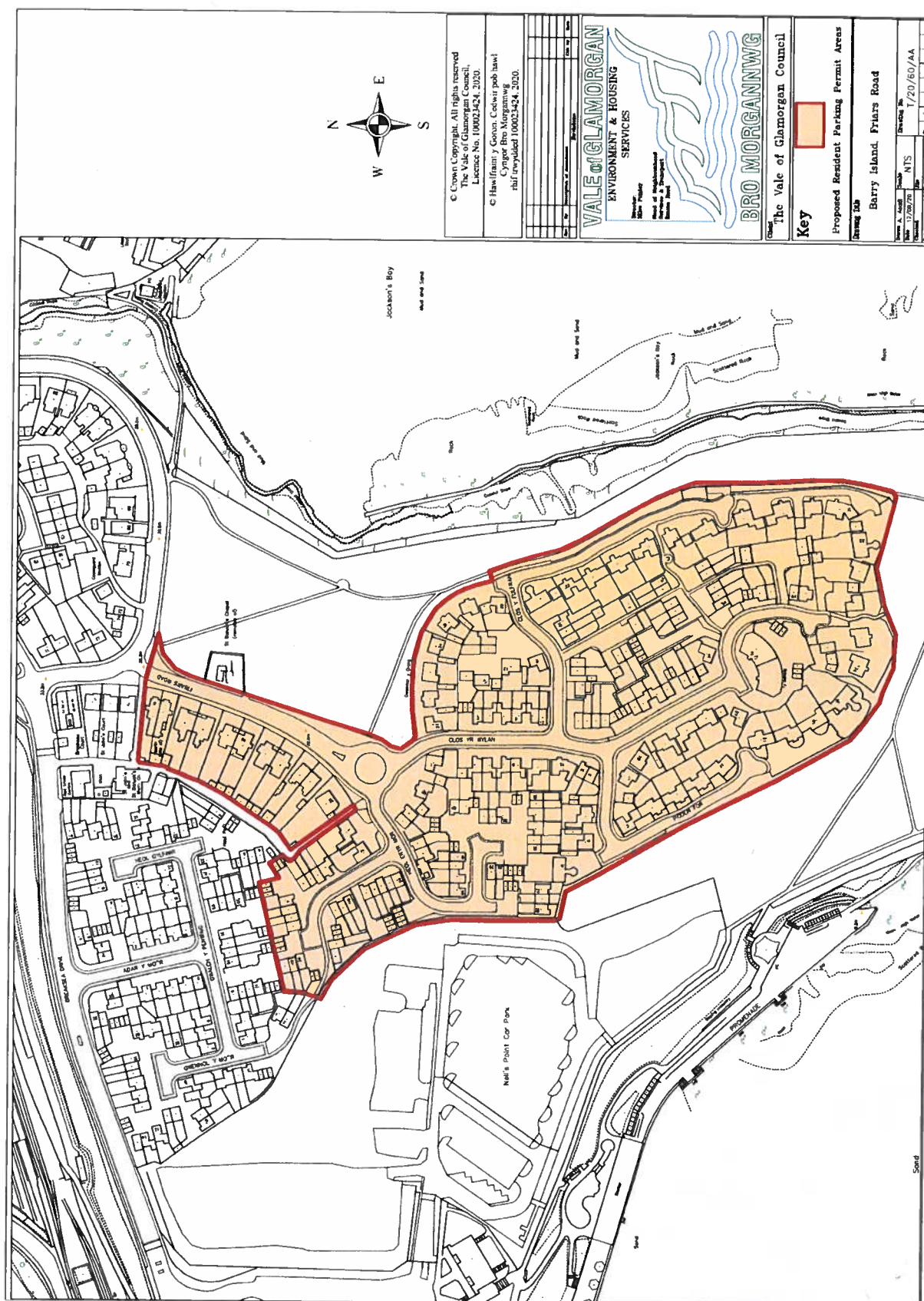


Barry Island – Zone: BIZ04 (Scheme Drawing T/20/62/AA)

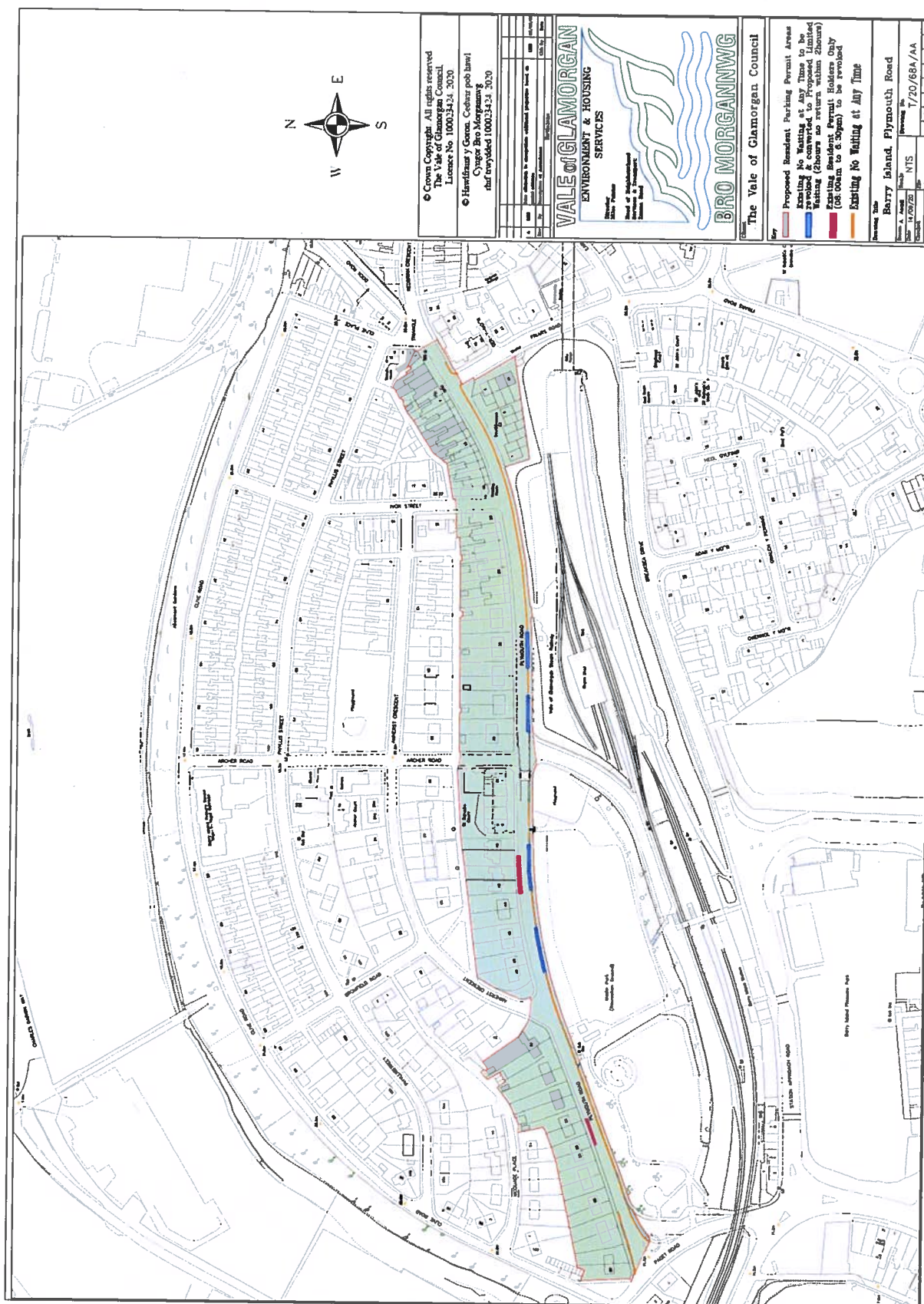


3

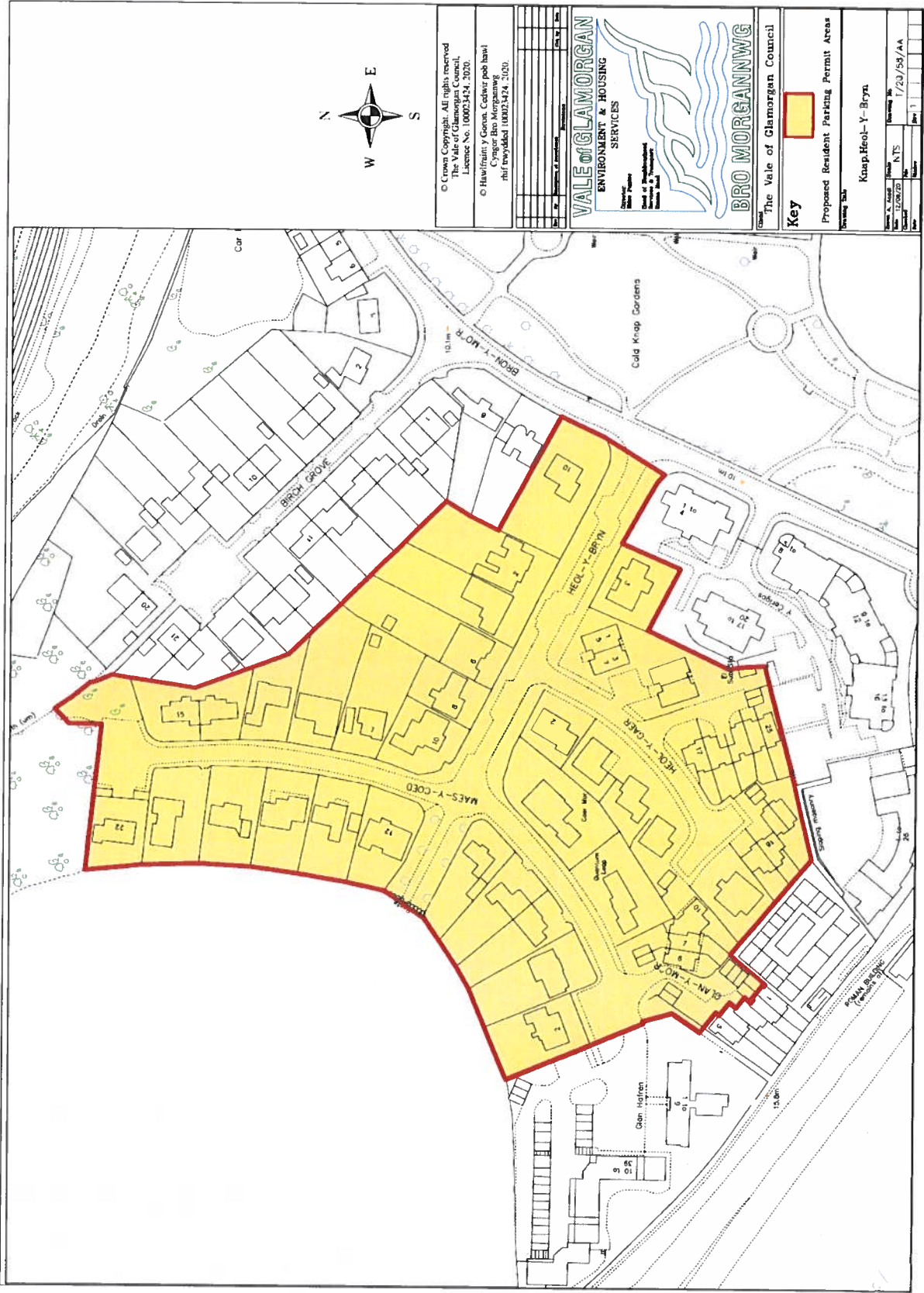
W



WD

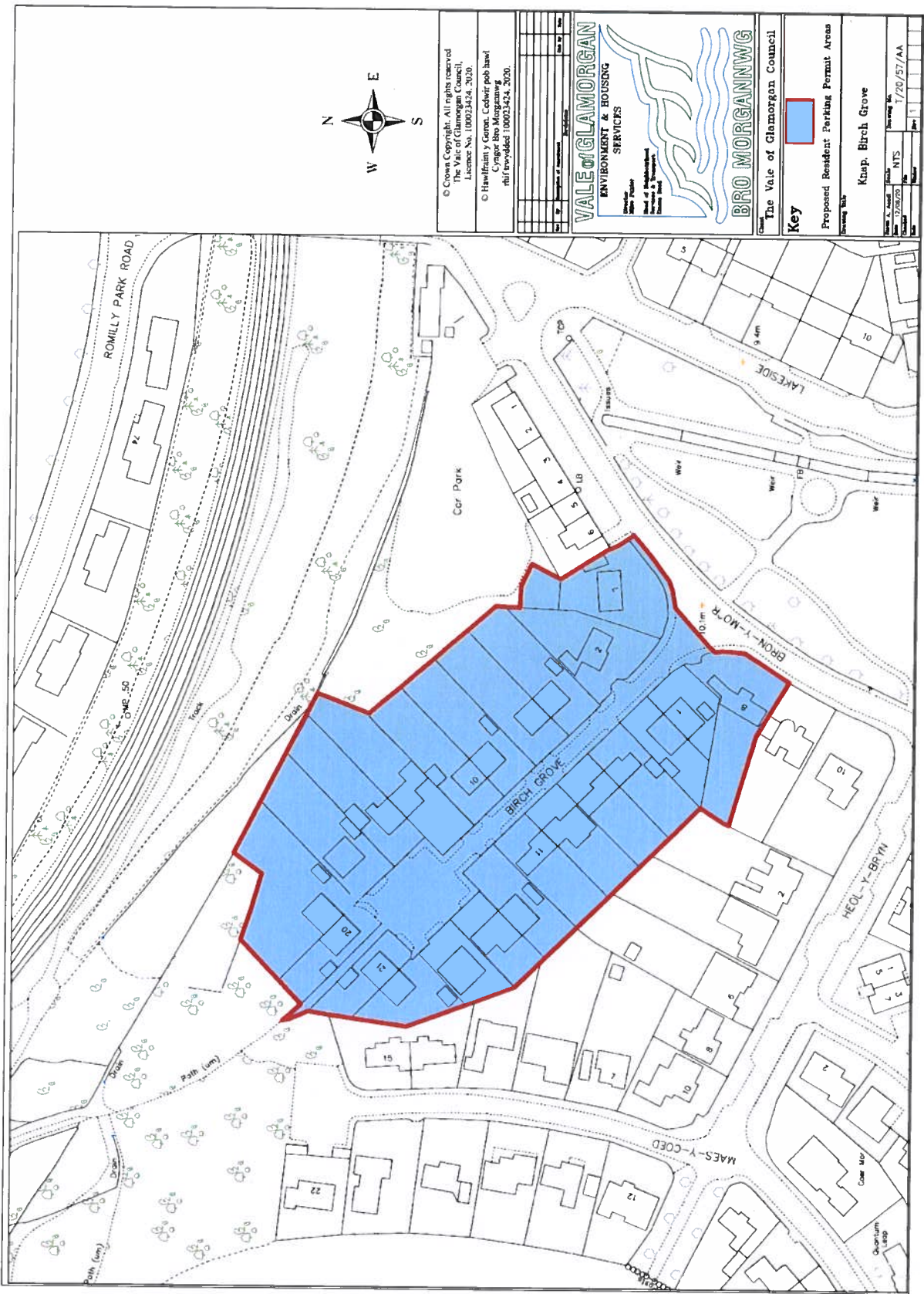


The Knap, Barry – Zone: TKZ01 (Scheme Drawing T/20/58/AA)



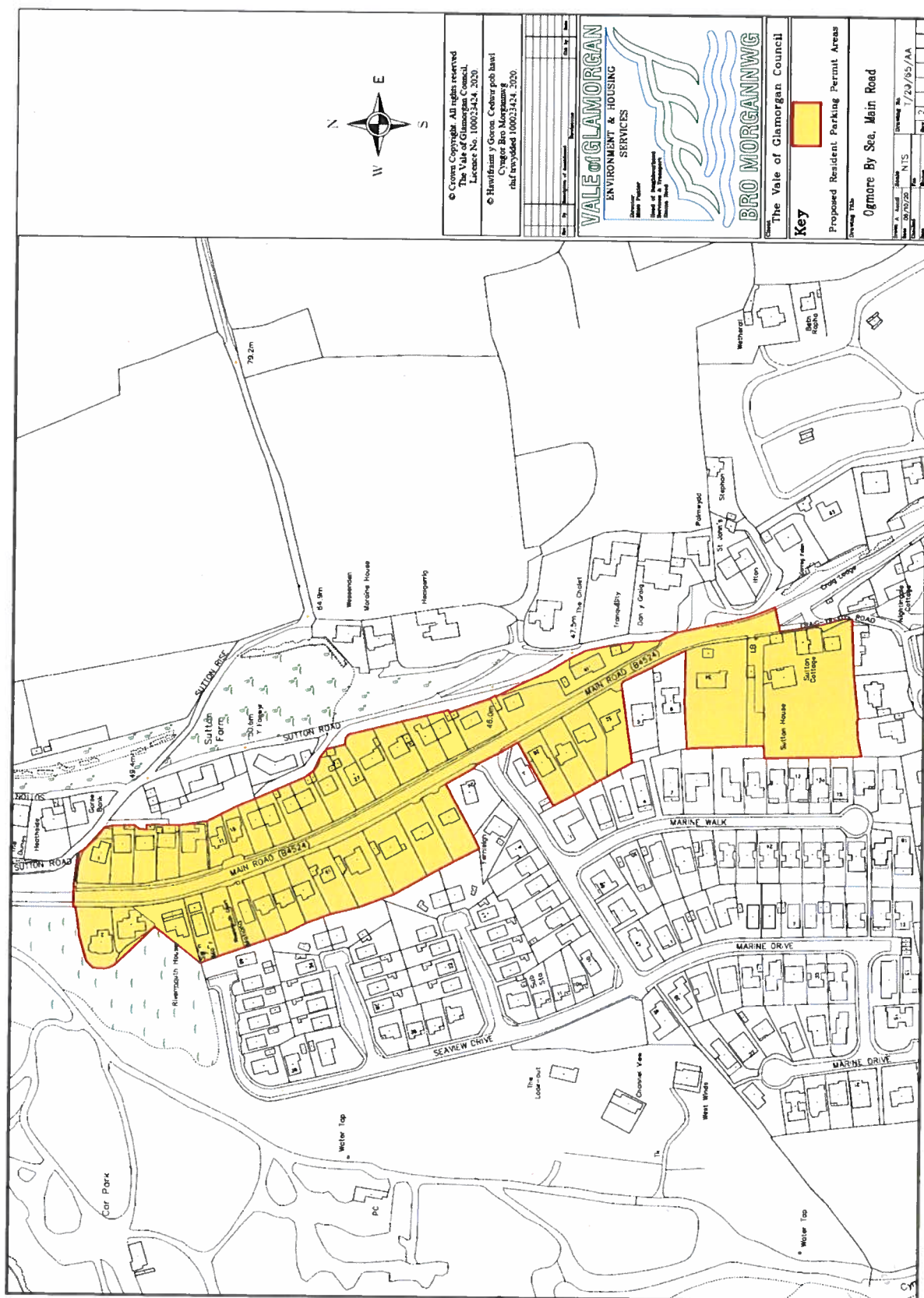
UP

The Knap, Barry – Zone: TKZ02 (Scheme Drawing T/20/57/AA)

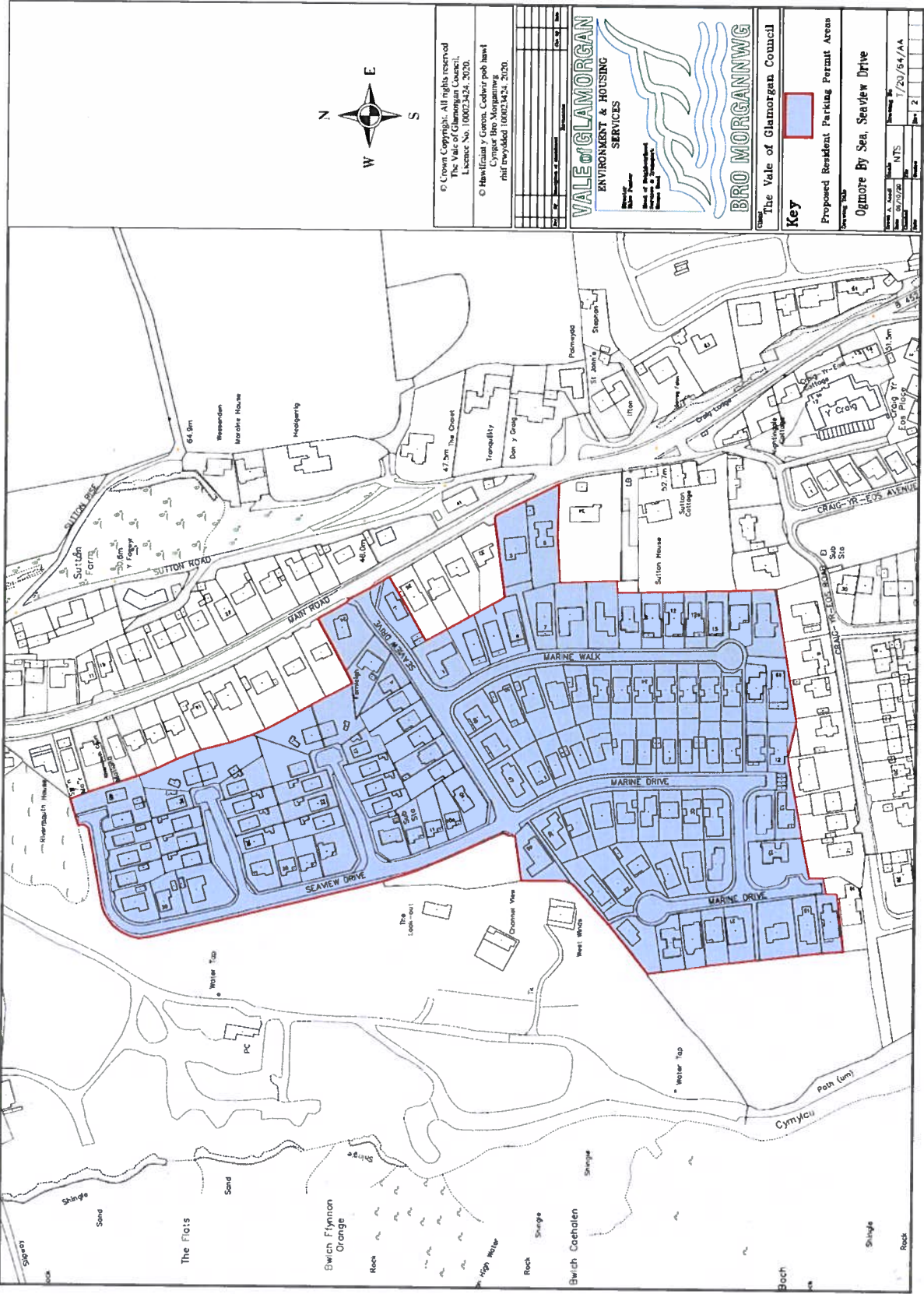


3

W

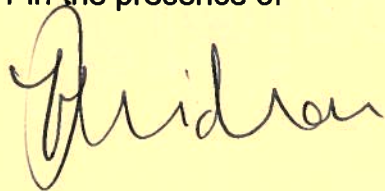


Ogmore-by-Sea – Zone: OBSZ02 (Scheme Drawing T/20/64/AA)



WD

**THE COMMON SEAL of
VALE OF GLAMORGAN COUNCIL** was
hereunto affixed the 5th day of July
2021 in the presence of



Operational Manager Legal Services
Vale of Glamorgan Council



17865
(1 of 2)